

WEAR TO GET THERE

BUSINESS PROFESSIONAL

Two-piece Suit

Solid neutral color or conservative pinstriped dress, skirt, or pant suit

Shirt

Button-up dress shirt or blouse in a solid color or subtle stripe/pattern

Shoes

Comfortable, closed-toe shoes with little to no heel



BUSINESS CASUAL

Shirt

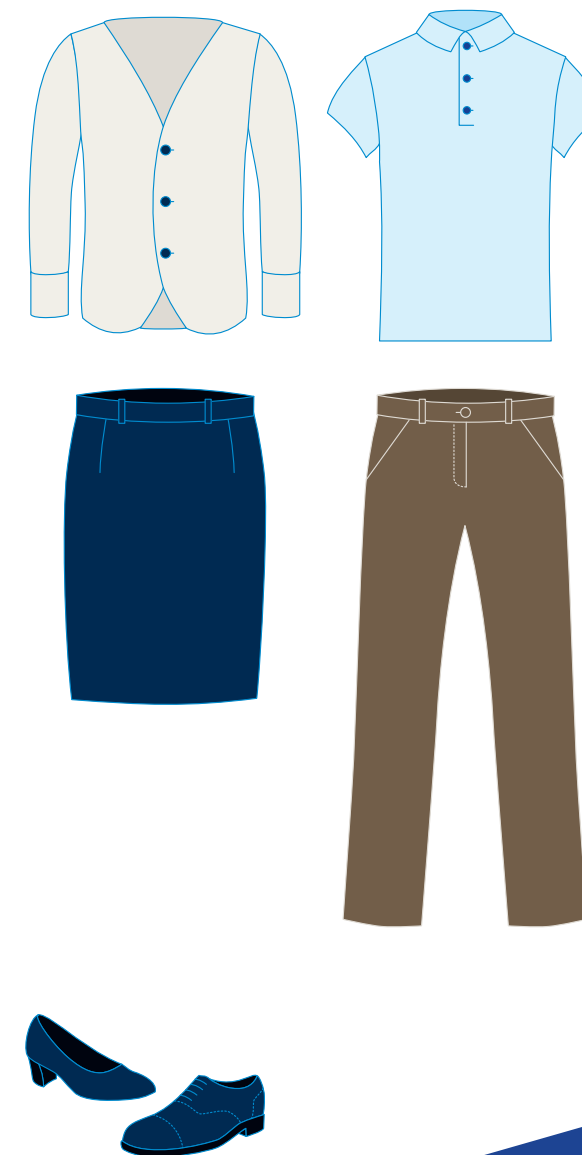
Jacket, blouse, cardigan, button-up shirt or a collared, knit polo shirt

Bottoms

Dress pant, khakis, knee-length skirt, or dark jeans without distressing

Shoes

Comfortable, closed-toe shoes with little to no heel



Appearance

- Washed and clean hair, styled off your face
- Trimmed, neat facial hair

Accessories

- Polished shoes and matching socks
- Small to medium sized purse or bag
- Simple jewelry and accessories

Things to Avoid

- Wrinkled, stained, or ripped clothing
- Heavy use of perfume, cologne, and body sprays
- Leggings, sweatpants, casual t-shirts, and flip-flops/sandals

University of Wisconsin
Eau Claire